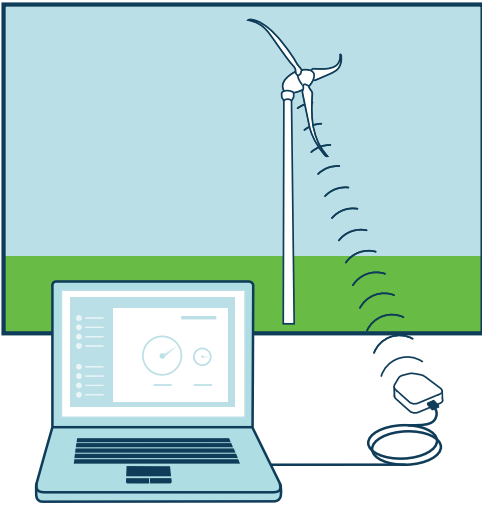


Monitor Skystream 3.7[®] Performance From Your PC



Communication and Monitoring with Skyview

Skyview allows a PC to communicate directly with your Skystream wind turbine so that you can monitor the system's performance. Skyview also allows service personnel to change setup options, install updates to make the system perform more efficiently, and troubleshoot the wind turbine.

How it Works

The Skyview Wireless PC Interface works with the Skyview Software to send and receive data to and from Skystream. You can operate Skyview from inside the comfort of your home or office. To ensure best performance, place the Skyview Interface no more than about 300 feet (100 m) from the turbine if you are indoors. Outside with a straight line of sight, the interface can communicate up to approximately one mile (1.6 km) from the turbine.

System Requirements

Skystream:

Any Skystream 3.7 with:

- Installed 2.4 GHz (ZigBee) communications package
- Firmware version 2.0 or greater

PC:

- Windows XP or Windows Vista*
- A USB port

If you are not sure your system meets these requirements, contact your Skystream dealer.

*Macintosh compatible software expected to be released in 2009.

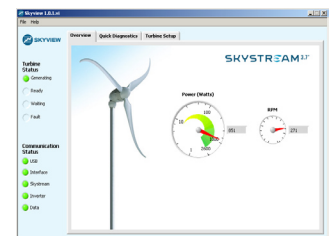
Skyview Wireless PC Interface

The USB-connected Skyview Interface is a transceiver that allows communication between a PC and your Skystream. Communication can take place any time the PC is running Skyview.



Skyview Software

Your dealer uses Skyview Software to set up the turbine and establish communication. After setup, you use the software to monitor your Skystream. Watch live as Skyview Software 1.01 displays instantaneous power generation, RPM and communication status. Skyview 2.0, to be released in early 2009, will let you graph energy production for the month, year, week, or any time period you choose.



SKYSTREAM 3.7[®]

Southwest Windpower

1801 W. Route 66

Flagstaff, AZ 86001 USA

928.779.9463

www.skystreamenergy.com

Makers of Skystream 3.7[®] / AIR / Whisper