



# Wireless PC Interface & Skyview Software

## Quick Start Guide

*The Wireless PC Interface and Skyview Software are compatible with Skystream 3.7 wind generators with installed 2.4 GHz communications packages and firmware version 2.0 (and greater).*

## Southwest Windpower

Renewable Energy made Simple

1801 W. Route 66  
Flagstaff, AZ 86001  
928-779-9463  
[www.skystreamenergy.com](http://www.skystreamenergy.com)

## Wireless PC Interface and Skyview Software- Quick Start Guide (Print this guide)

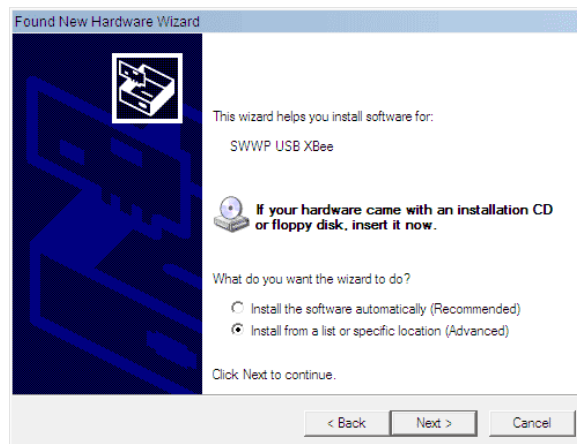
The drivers included with this package must be installed in order for your PC to recognize the Wireless PC Interface. These drivers will work with the USB adapter and the previous versions of the Skystream Datalogger programs, but the old drivers will not work with the Wireless PC Interface.

### Install the Wireless PC Interface

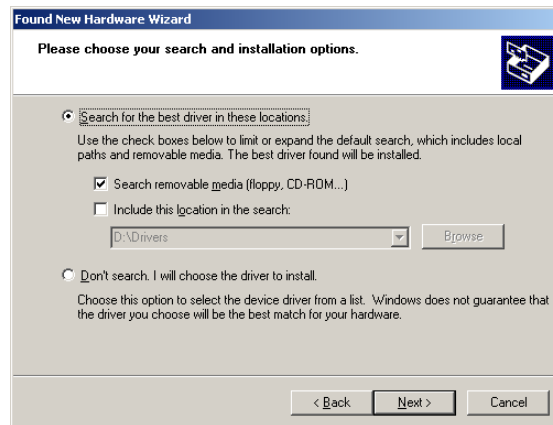
1. Attach the Wireless PC Interface to the computer's USB port using the USB cable provided.
2. Choose "No, not this time" on the first screen of the "Hardware Wizard."



3. Choose "Install from a list or specific location."

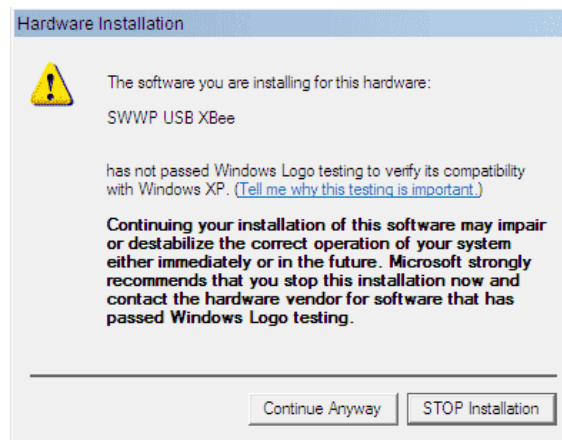


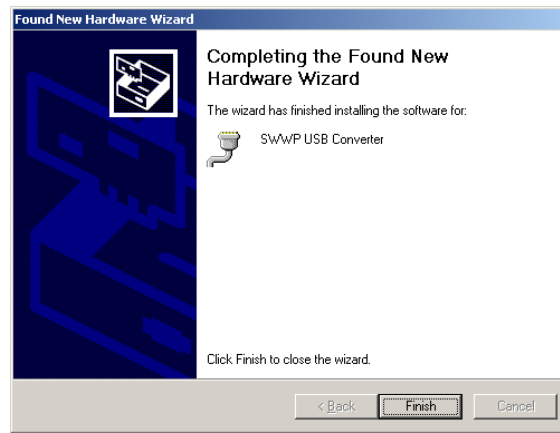
4. If you received this software on a CD-ROM, the drivers are located in the “Drivers” folder on that CD-ROM. If you choose “Search removable media” Windows should find the drivers.



If you received this software via a download, unselect “Search removable media” and instead choose “Include this location in the search:” Browse to the folder in which you saved the downloaded drivers.

5. Click “Continue Anyway”.

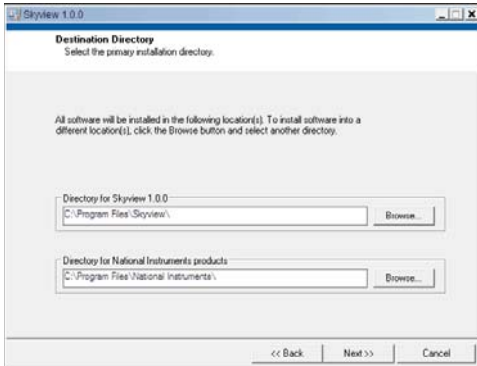




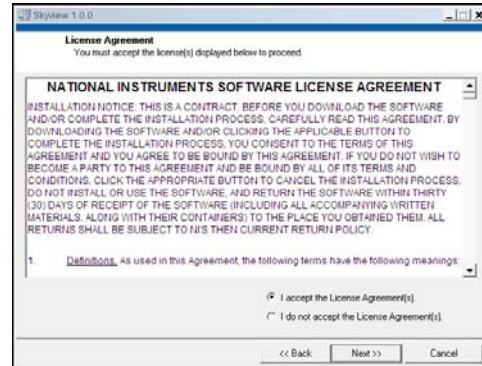
6. You will be prompted to install another driver. Repeat steps 2 through 5

## Installing Skyview Software

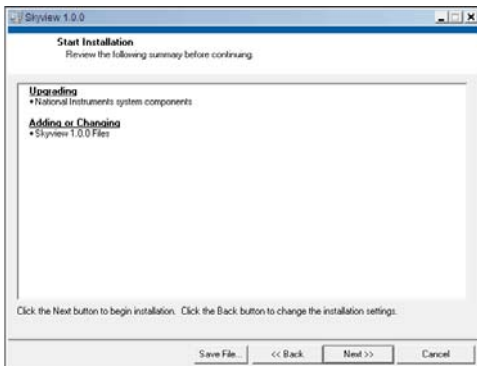
1. Run the file “setup.exe” from the “Skyview” folder included on this CD-ROM, or from the folder in which you saved the files (if you downloaded them).
2. You will see the following screens during the installation process.



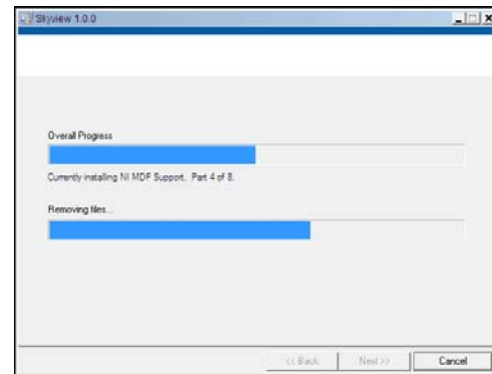
Choose the directory and click “Next”



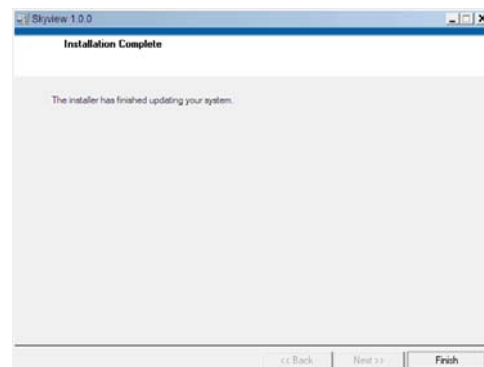
“Accept” the License Agreement, click “Next”



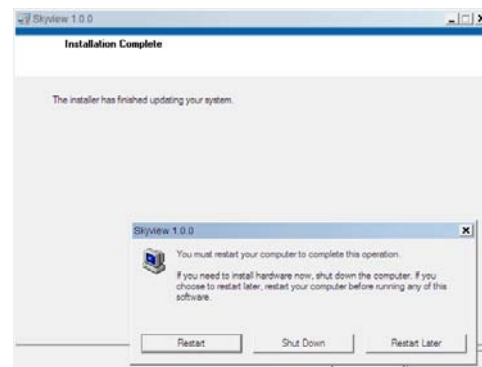
Verify the version, click “Next”



Wait while the software loads

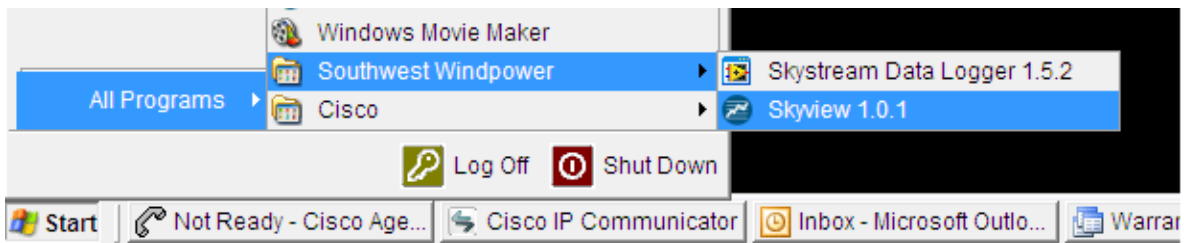


Click “Finish”

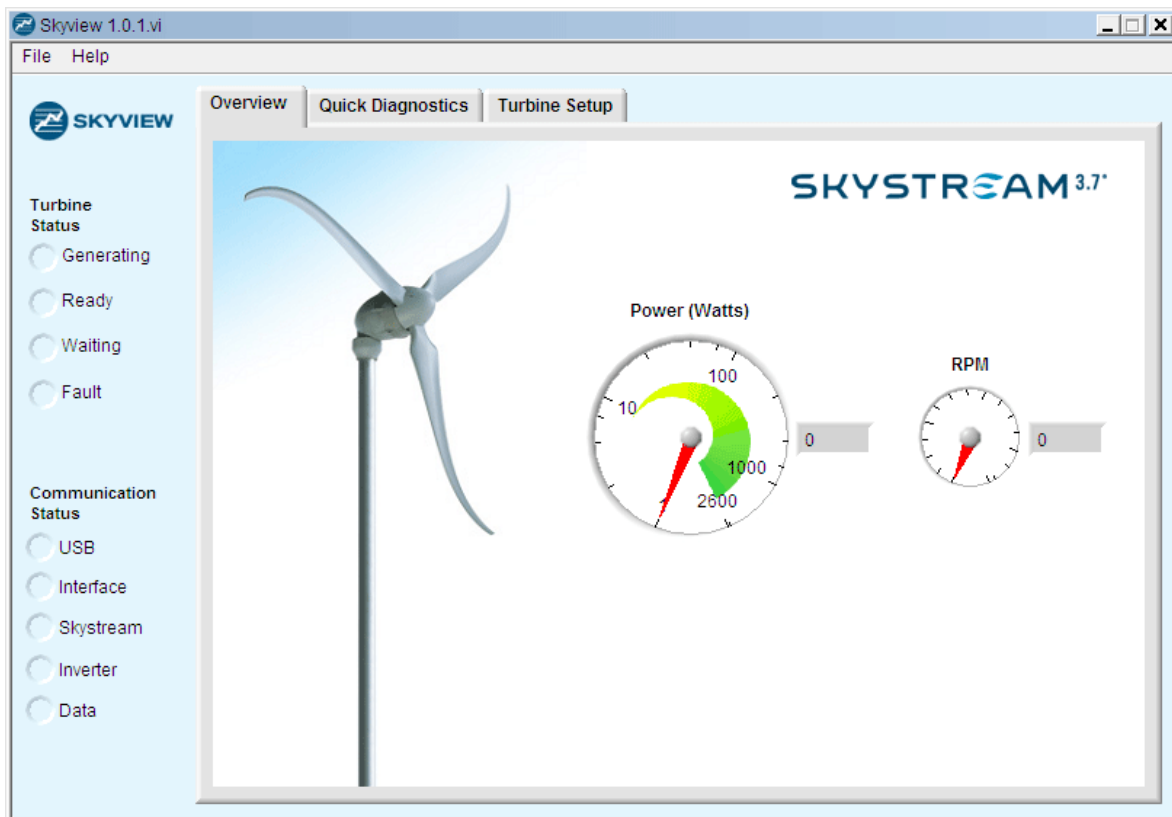


Restart your computer if asked to do so.

3. You can now run Skyview from Start→Program Files→Southwest Windpower→Skyview



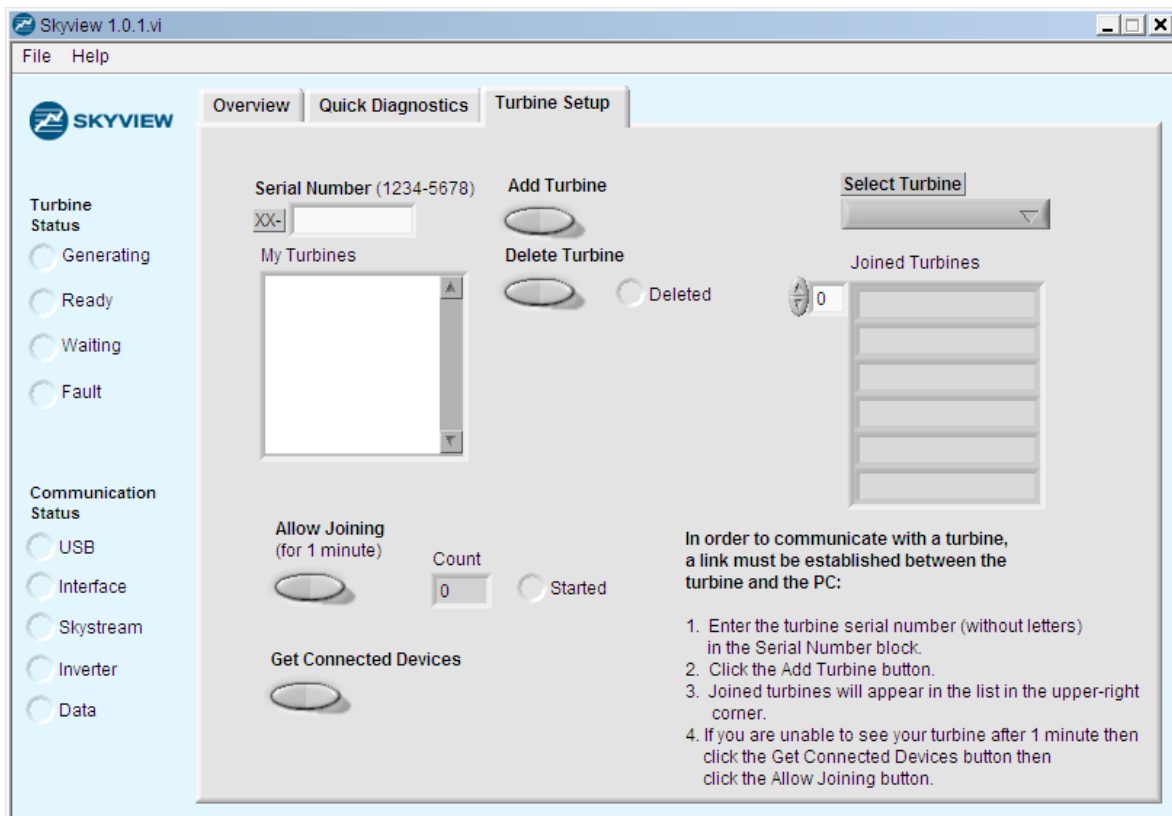
The main screen of the Skyview Software shows turbine power output and RPMs, plus turbine and communications status indicators. If your USB and Interface indicators are not illuminated, and the Wireless PC Interface is plugged into your PC, click on File>Connect to USB Converter.



**(Please see the following page for communications joining instructions)**

The Wireless PC Interface permits your PC to communicate directly with a Skystream turbine. Skyview can display the data from one turbine at a time. Select the turbine you wish to monitor on the Turbine Setup page, using the Select Turbine dropdown list.

Before the Skyview software can communicate with your turbine, it is necessary to link your Wireless PC Interface with the turbine's radio and add your turbine to the Select Turbine list. The first time you visit Skyview, or any time you add a new turbine, you should go to the Turbine Setup page and follow the instructions in the bottom right corner of the screen.



Here are some important notes regarding Wireless PC Interface and Skystream links:

- As long as a Wireless PC Interface module is powered up, by connection to an active USB port on your PC, the link established between it and a Skystream turbine will remain intact even if the Skystream loses power. When the Skystream is powered back up, it will automatically attempt to re-establish communication with the Wireless PC Interface with which it was previously linked.
- As long as a Skystream turbine is powered up, the link established between it and a Wireless PC Interface will remain intact even if the Wireless PC Interface is unplugged from your PC or loses power.

- If your installer used a Wireless PC Interface for turbine setup, but you have your own Wireless PC Interface you wish to use, follow these steps to create a new link:
  1. Make sure your installer's Wireless PC Interface is either out of range or unplugged from the PC.
  2. Power down the turbine for 10 minutes to break the first Interface link.
  3. Plug your Wireless PC Interface into an active USB port on your PC.
  4. Reconnect the Skystream power and follow the joining instructions on the Turbine Setup page.

Additional instructions, as needed, and terminology explanations are provided on the pages of the Skyview program.