

Sentinel ASA-100 Tilting Wind Turbine Tower

Robust, reliable construction |

When a tower isn't strong enough for the job at hand all the greatest features on earth don't mean a thing. When we designed the ASA-100 we knew it had to stand up to the worst the North American climate could throw at it which is why we settled on a wide leg, triangular lattice design and why we rigorously test our designs in real world situations. Compared to flanged, guyed tubular designs, the ASA-100 represents a quantum leap in strength and reliability.



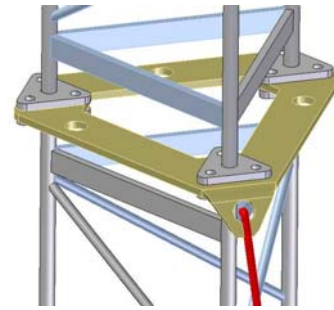
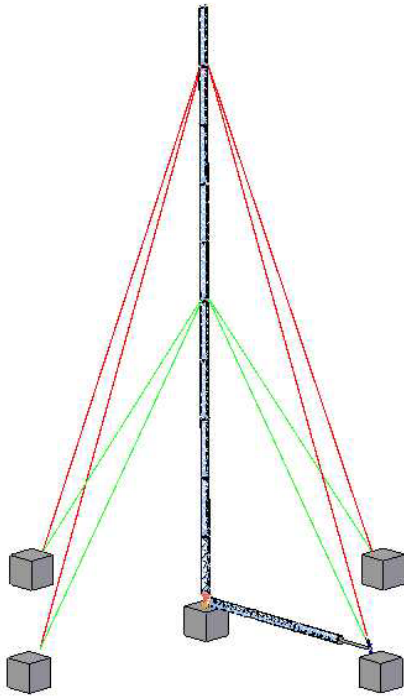
Unique design features |

At Sentinel we know that what works on paper doesn't always work in the field and so we listened to our dealers when they suggested the features we should include.

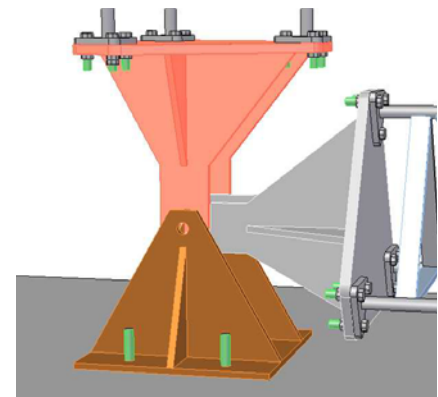
- Floating gin pole hinge
- Booster gin pole
- Identical tower sections
- Light 160lb sections
- Pre-assembled guy sets
- Adjustable anchor system

ASA-100 Specifications	
Tower Configuration	Guyed, tilting, triangular lattice
Tower Height	30m (100')
Guy Radius	11m (38')
Number of sections	13 (10 tower, 3 gin pole)
Section Dimensions	3m long, 0.4m sides (10' long, 16" sides)
Section Weight	73kg (160 lb)
Gross Shipping Weight (gin pole included)	1270 kg (2800 lb)
Approved turbines	Soutwest Skystream and Whisper 500, Westwind 3kW and 5kW, Bergey 1kW
Max. turbine thrust load	4.4kN (1000 lbf)
Max turbine weight	225kg (500lb)
Tower Options	Tower hoist rigging
	Furling winch kit
	Turbine wiring harness
	Lightning protection

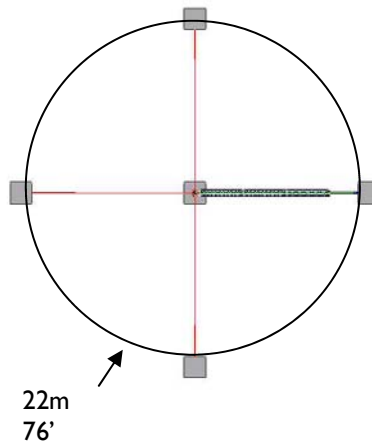
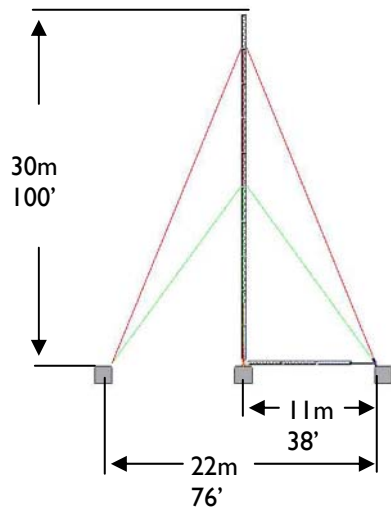
Sentinel ASA-100 Tilting Wind Turbine Tower



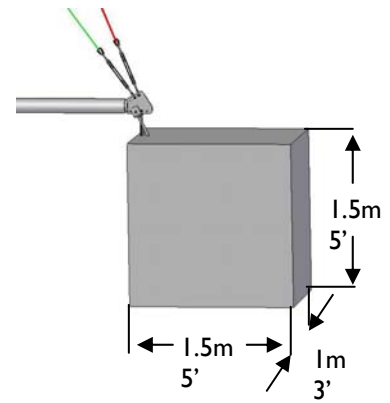
Modular guy attachments



Unique floating hinge design



Compact 11m guy radius



Example Foundation Block